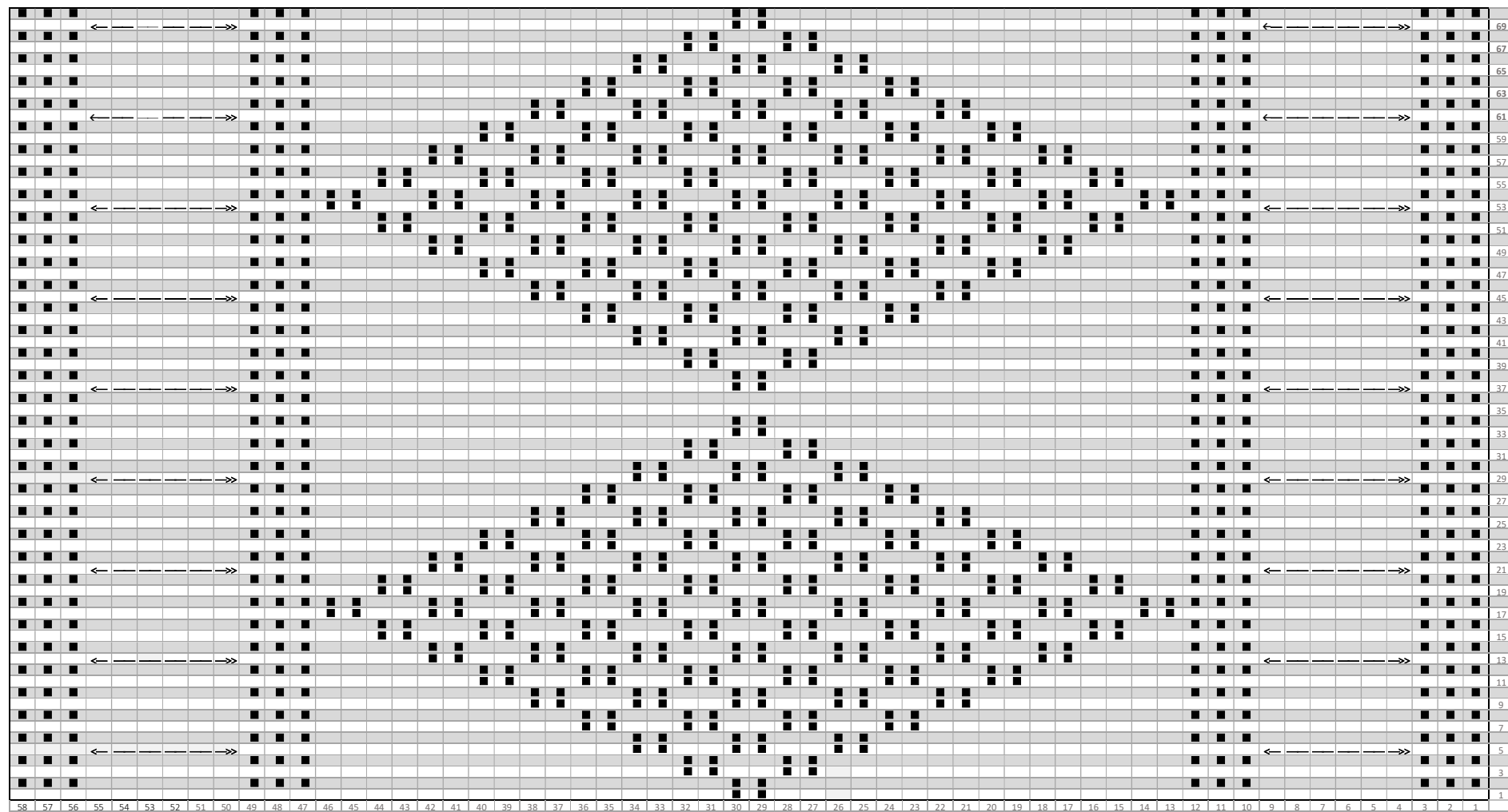


■ Purl stitch on the right side (knit stitch on the wrong side) <—> cable (turning to the right in this case)



Martin Warren (martin.warren@talktalk.net) and Val Smith



Attribution-NonCommercial
CC BY-NCJ



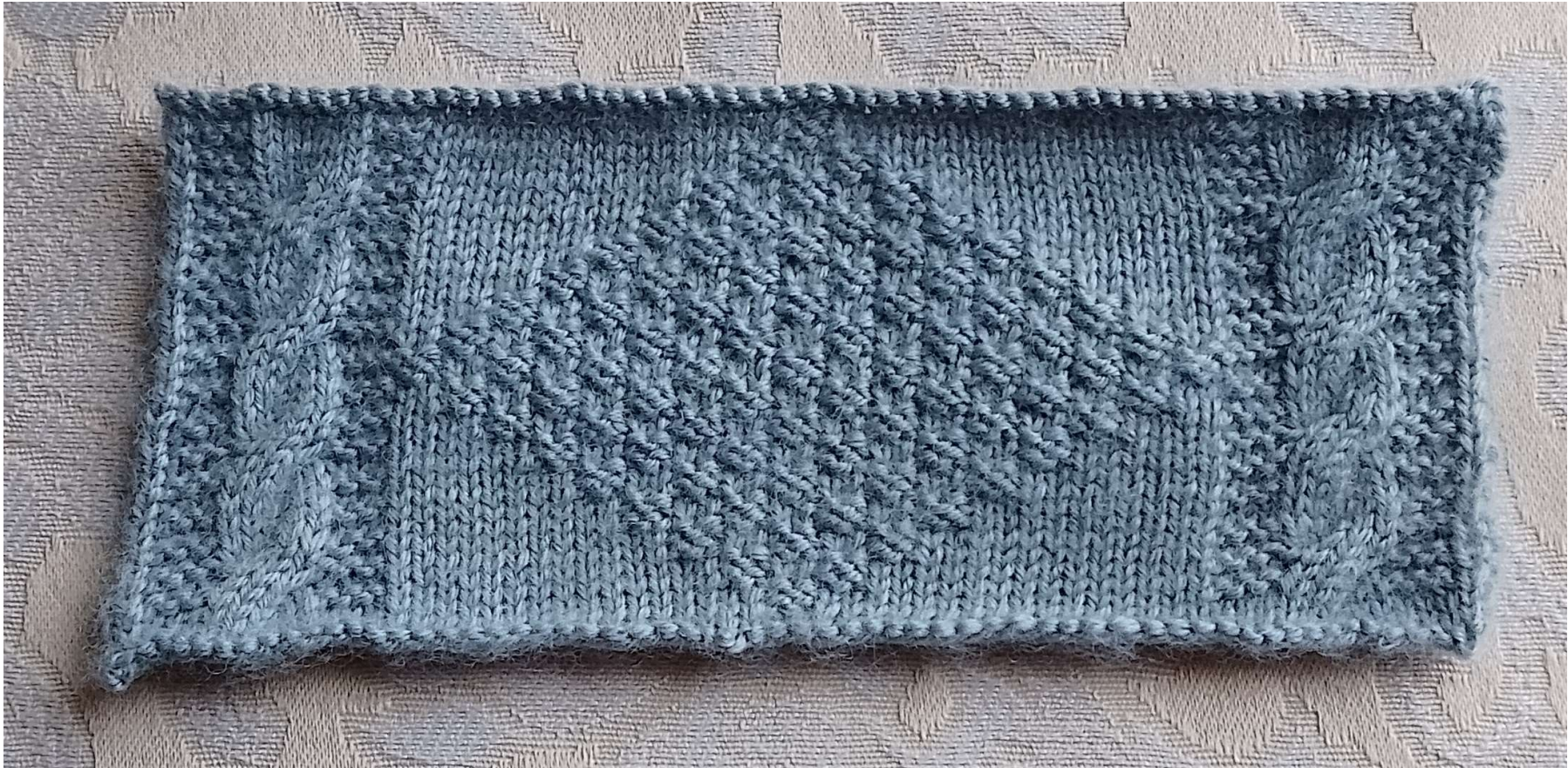
Photo c. 1900-1910, courtesy of Alex Snell

Charles Barnard born 1857. Great great grandfather of Alex Snell.

Martin Warren (martin.warren@talktalk.net) and Val Smith



Attribution-NonCommercial
CC BY-NCJ



Swatch by Val Smith

Martin Warren (martin.warren@talktalk.net) and Val Smith



Attribution-NonCommercial
CC BY-NCJ

General arrangement

In the chart above, for reason is scale, only the central part of the gansey is shown. The general arrangement can be seen in the photographs:

Cast on 324 sts and knit about 2 3/4 inches of k2 p2 rib, then about 10 inches of plain with p2 seam sts at the sides.

Yoke

1. A border by the left sleeve of garter stitch 3 sts wide	3
2. A right-hand column of double moss meshes 35 sts wide on a plain field	35
3. Three 3 x 3 cables crossing every 8 rows separated by columns of garter stitch 3 stitches wide	30
4. A central column of double moss meshes on a plain field	35
5. Three 3 x 3 cables crossing every 8 rows separated by columns of garter stitch 3 stitches wide	30
6. A left-hand column of double moss meshes 35 sts wide on a plain field	35
7. A border by the left sleeve of garter stitch 4 sts wide	4

172 stitches

The sleeve begins with a rig, two rounds purl, 2 rounds plain then four bands of double moss stitch, 14 rounds each, separated by 14 rounds of plain. Plain then to the cuff. Cuff about 2 3/4 inches of ks p2 rib, finishing with a round or two of plain and casting off.

The neck is a tall stand up collar worked in k2 p2 rib.

Tension

Number of stitches in elements: $(172 + 2 \text{ seam sts}) \times 2 = 174 \times 2 = 348 \text{ sts}$ (87 ribs in the welt)

Estimated 38 inch chest so **tension = 9.2 spi and about 13.1 rpi**

