



Pre-1915.

A shallow yoke, less than halfway down the body; spanning more or less between the arm pits. Drop shoulder, some pattern at the top of the sleeves, plain below. It is not clear that this is knitted in the round or sewn together, or if hand- or machine-knitted. Roll neck.

Tension: About 5 stitches to the inch.

Approximately 34 cheques across the chest 3 sts each $3 \times 34 = 102$ sts. So, cast on 204 sts. Chest = $204 / 5 = 40.8$ inch approximately.

Martin Warren (martin.warren@talktalk.net)



Attribution-NonCommercial
CC BY-NCJUD

GP37a Shackleton Company reproduction sweater

<https://shackletonlondon.com/collections/knitwear>



The Shackleton Company's reproduction is said in one review to be knitted in the round, with no seams. However, examination of the photographs used by the Shackleton Company suggests otherwise. The sleeves are sewn in at an angle, not a drop shoulder. It also appears to be machine knitted.

<https://shackleton.com/blogs/articles/100-years-in-the-making>

Martin Warren (martin.warren@talktalk.net)



Attribution-NonCommercial
CC BY-NCJUD



Martin Warren (martin.warren@talktalk.net)



Attribution-NonCommercial
CC BY-NCJUD

GP37 version 1.2 : 6.12.2022

Status: provisional

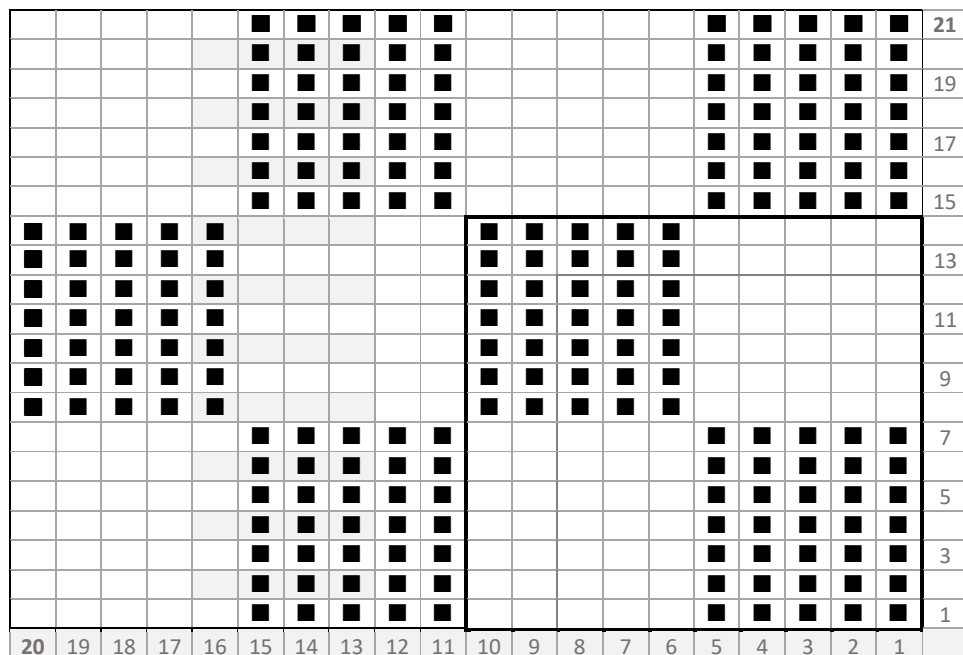
Twenty two cheques across the chest (not counting set-in sleeves. $22 \times 5 = 110$ sts

220 sts around chest @ 40" = **5.5 spi**

Martin Warren (martin.warren@talktalk.net)



Attribution-NonCommercial
CC BY-NCJUD



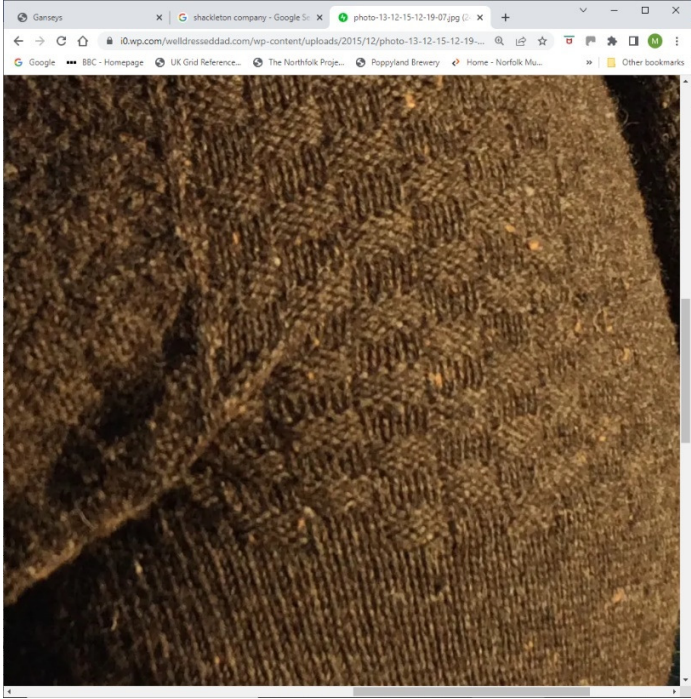
Martin Warren (martin.warren@talktalk.net)



Attribution-NonCommercial
CC BY-NCJUD



Martin Warren (martin.warren@talktalk.net)



Attribution-NonCommercial
CC BY-NCJUD